

Benaraz engineering  
and production group  
products catalog

Made in Iran - Shiraz



Concrete Product

[www.Bana-raz.ir](http://www.Bana-raz.ir)

+98 917 000 4570 +98 71 36480669

2 0 2 3  
c a t a l o g u e



# Contents

Topic	Page
About us .....	02
The characteristics of Bana Raz's products .....	03
Dimensions of concrete tiles .....	04
concrete bricks .....	05
concrete floorings .....	06
Reinforcement .....	07
masonry support .....	08
Texture diversity .....	09
Quality of color .....	10
Custom products .....	11
Introduction of products .....	12-43

---

# About us

---



Bana - raz

The Bana Raz Company, with a clear vision towards the production and supply of authentic and sustainable materials, began its activities in 2015. Bana Raz Company takes pride in being the first producer of concrete exposé and fire-resistant bricks in the southern region of the country.

Among the company's primary goals, three general objectives can be highlighted:

Creating direct and indirect employment opportunities by utilizing the skills and potential of young and experienced workforce.

Achieving self-sufficiency in the production of concrete products in the southern region of Iran.

Exporting these products to neighboring countries to compete with similar foreign products.



# The characteristics of Bana Raz's products

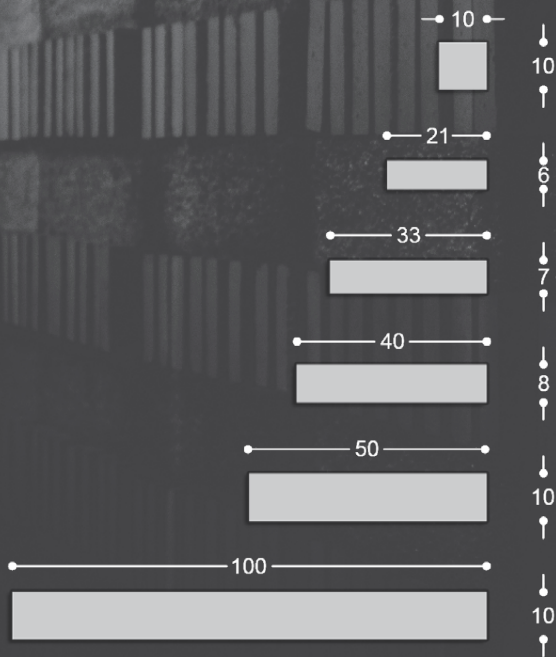
- Weight Reduction: Lightweight construction materials.
- Sound and Thermal Insulation: Providing insulation against both sound and heat.
- Resistance to Stress: High durability and resistance to various stresses.
- Climate Resilience: Suitable for use in different climatic conditions.
- Diverse Construction Methods: Offers a variety of construction techniques.
- Modern and Up-to-Date: Incorporates modern and contemporary design elements.
- Customizable Colors: Can be customized in terms of color.
- Suitable for Architectural Designs: Complements architects' design preferences.
- Reinforced Concrete: Utilizes reinforced concrete for added strength.



BRICKS

## Concrete bricks

Bana Raz Company introduces concrete bricks as the third generation of bricks. Concrete bricks have similar dimensions to previous generations of bricks and even offer a greater variety of dimensions to meet the demands of contemporary design. The aim has been to address the shortcomings of previous generations and provide them with a new character in terms of texture and color.







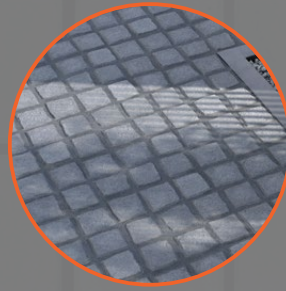
TILES



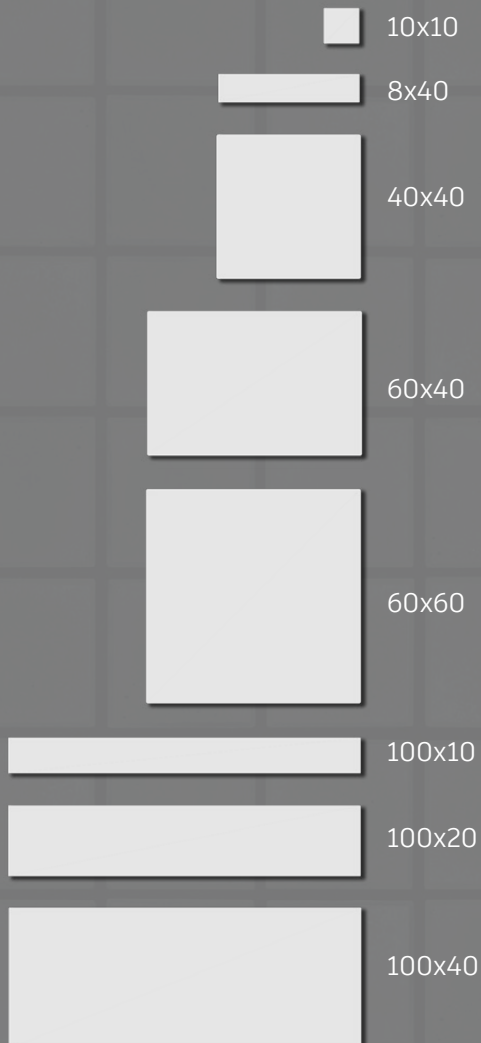
## Concrete Tiles

They are not meant to replace other building materials; they have unique characteristics in terms of texture, color, and dimensions that cater to the specific needs of a particular spectrum of clients and contractors.





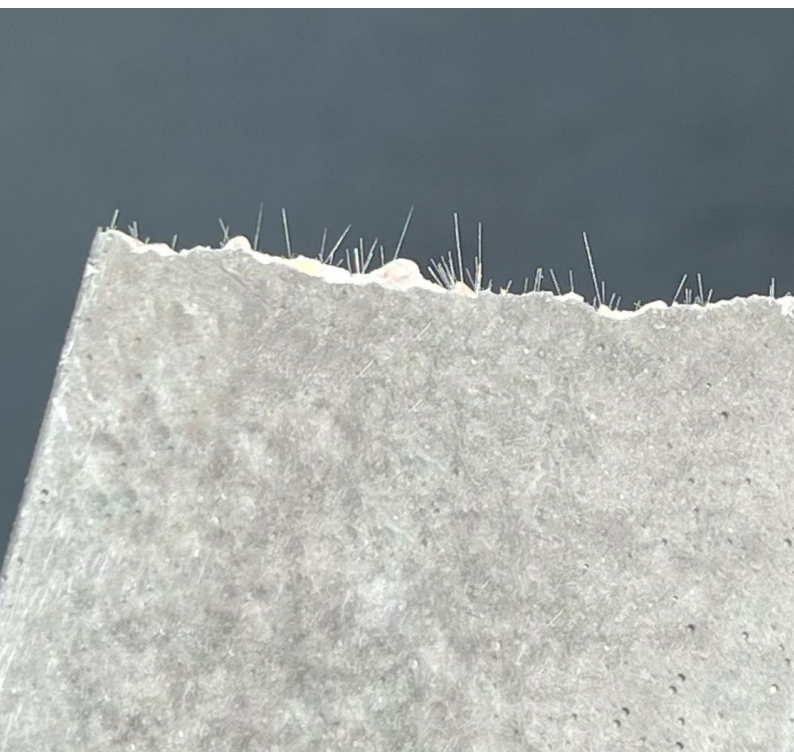
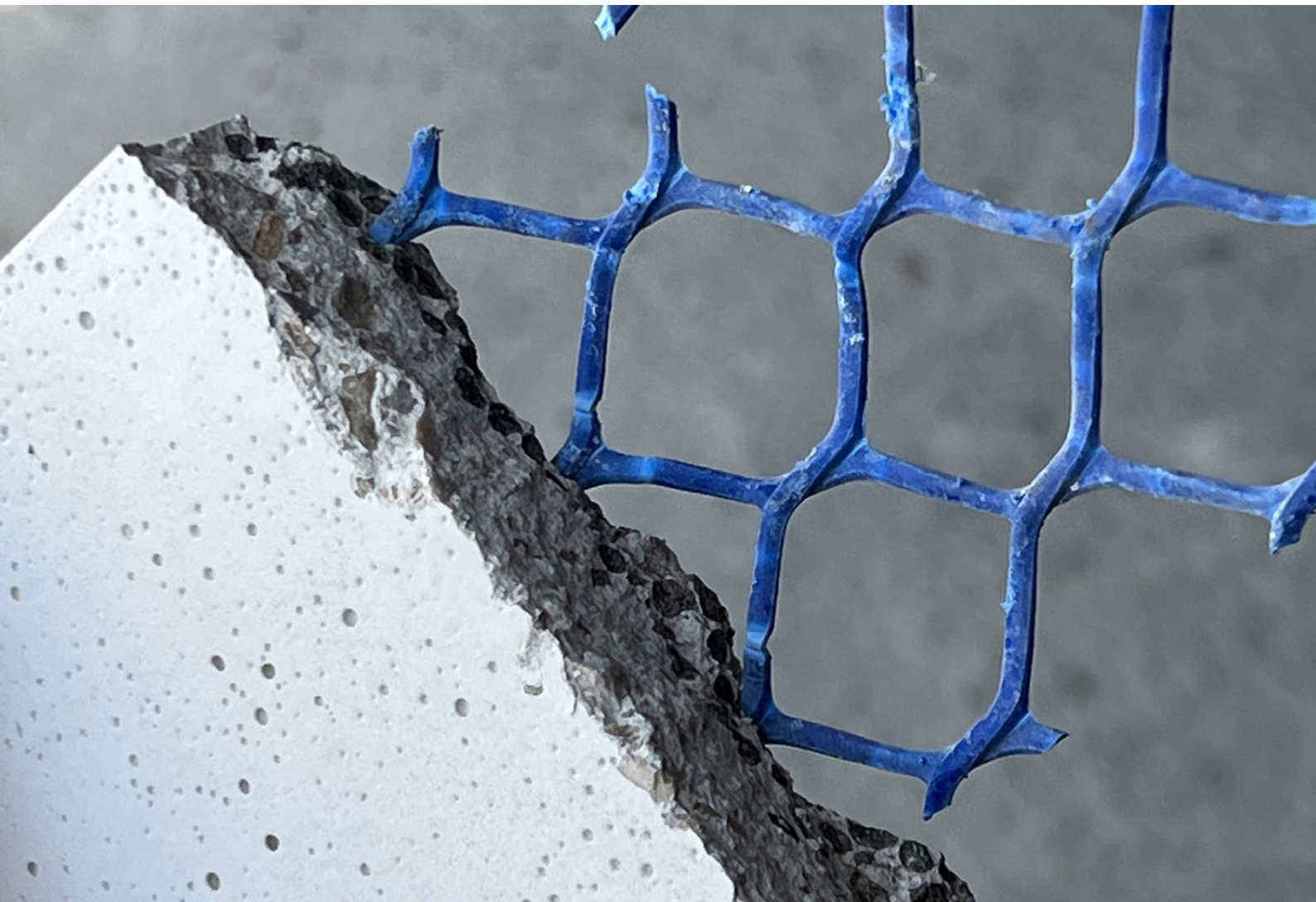
Flooring



## Concrete Flooring

In addition to our exclusive flooring products, our other offerings are also suitable for practical flooring applications due to their high compressive strength, appropriate thickness, durability, and long-lasting color and form retention, all of which are inherent properties of concrete.





---

## Reinforcement

In concrete products, reinforcement is a crucial and important factor that contributes to the continuity and increased resistance of the product against wear, tension, and stress. Bana Raz employs two methods of reinforcement in its concrete plaques: using mesh reinforcement and utilizing fibers.

For the collection of concrete bricks with a weight of approximately one kilogram, only the use of fibers is sufficient as reinforcement. This reinforcement enhances the product's durability and its ability to withstand various stresses.

---



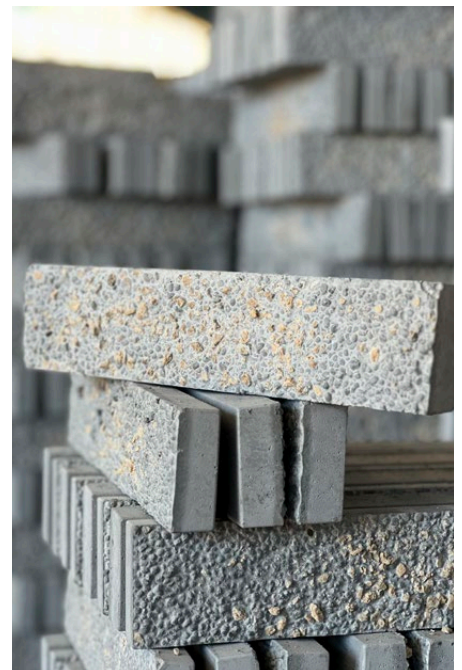


## masonry support

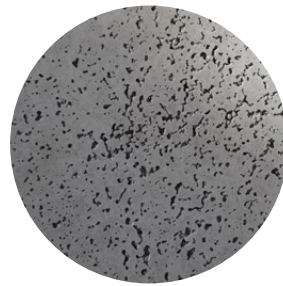
The presence of masonry supports is one of the key elements in various methods of execution. Bana Raz Company takes into consideration this diversity in its products based on the needs of contractors.

The masonry supports you see in the image are embedded within the product in a circular pattern with iron corners for dry installation.

In the wet or mortar-based installation method, using wire masonry support and fan-shaped masonry support made of galvanized material, as well as adding fine sand behind lightweight products, approximately one kilogram, can lead to better integration with the mortar, ultimately speeding up the installation process and enhancing durability.

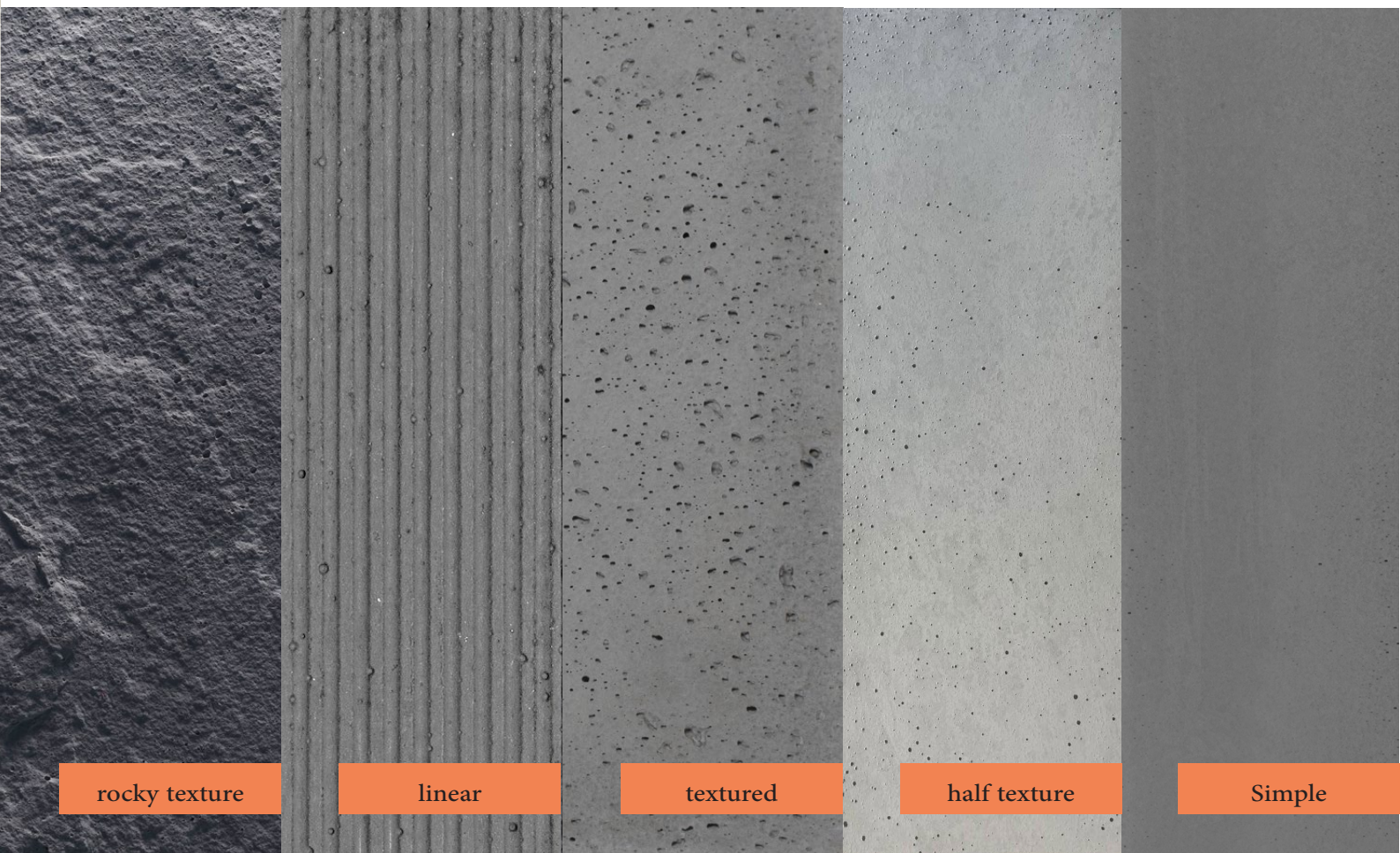






## Texture diversity

Concrete molds with five different textures are available and can be custom-made according to the orders and designs of contractors and architects.



rocky texture

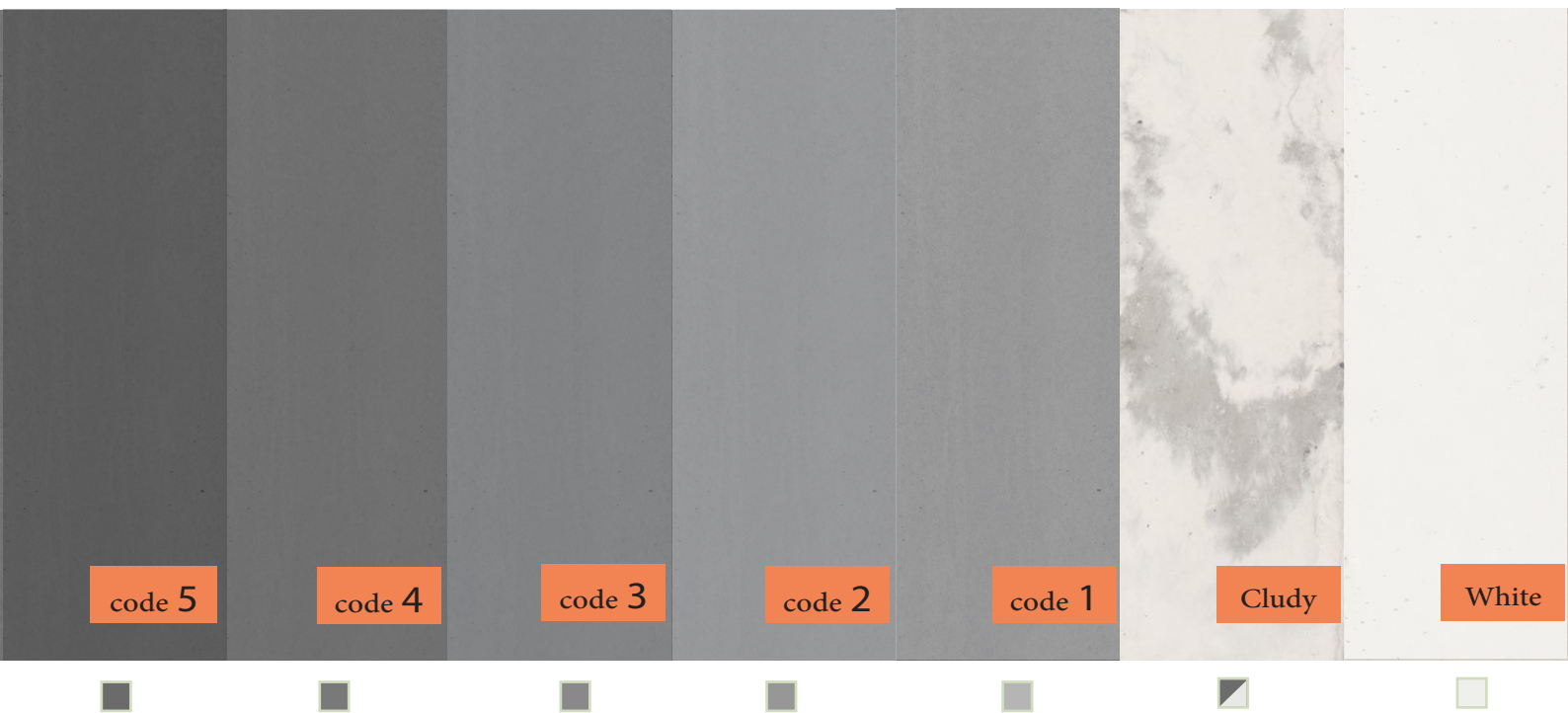
linear

textured

half texture

Simple





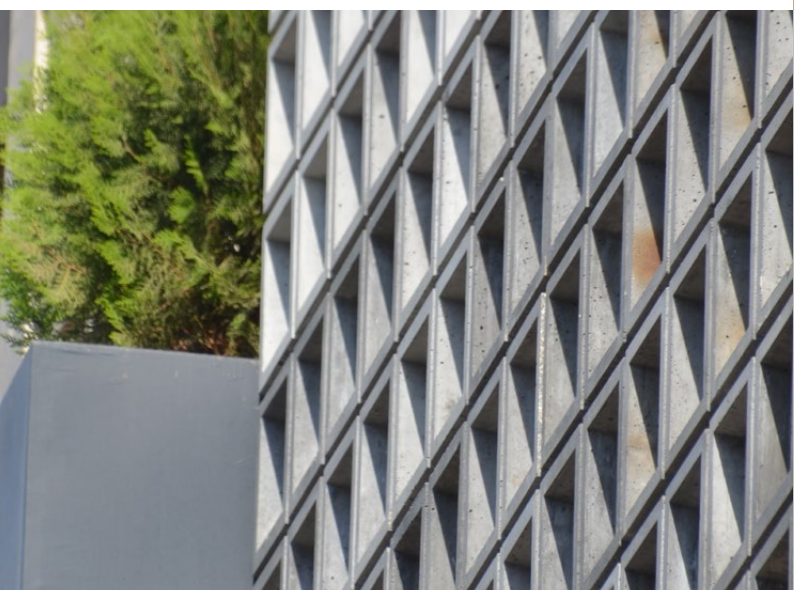
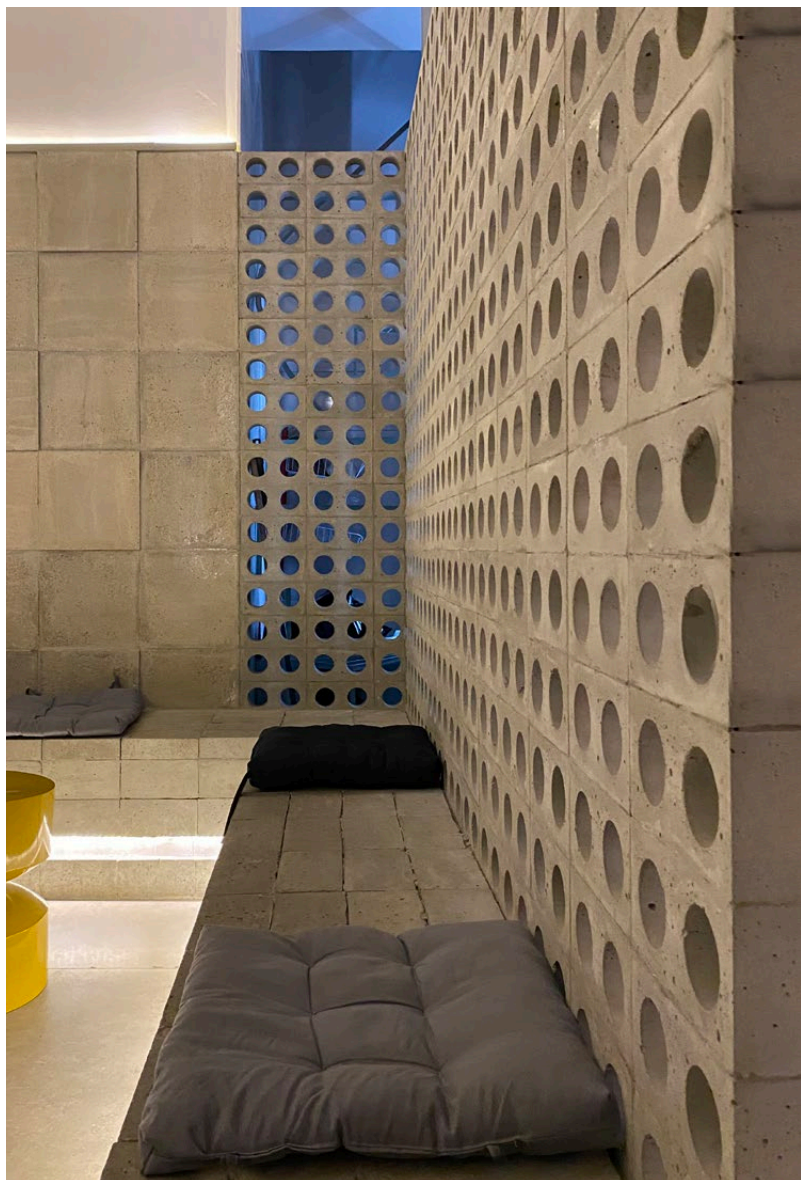
## Quality of color

Bana Raz, as part of its commitment to producing authentic concrete products, offers a default range of seven primary colors. Additionally, custom colors can be ordered based on the available market colors in the country.



## From the idea to production

Bana Raz, in line with one of its objectives, which is flexibility in production, has aimed to not only produce standard products but also be responsive to the needs of architects in their designs.











## Concrete brick

10 cm \* 10 cm

Dimensions ●

3 cm

Thickness ●



Color quality ●







## Concrete brick

10 cm \* 10 cm

3 cm

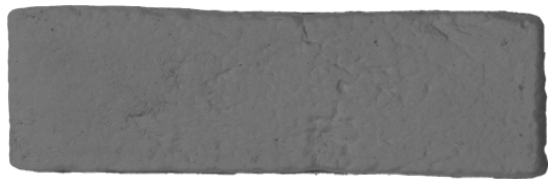
Dimensions ●

Thickness ●



Color quality ●





Old-style concrete brick

6 cm \* 21 cm |

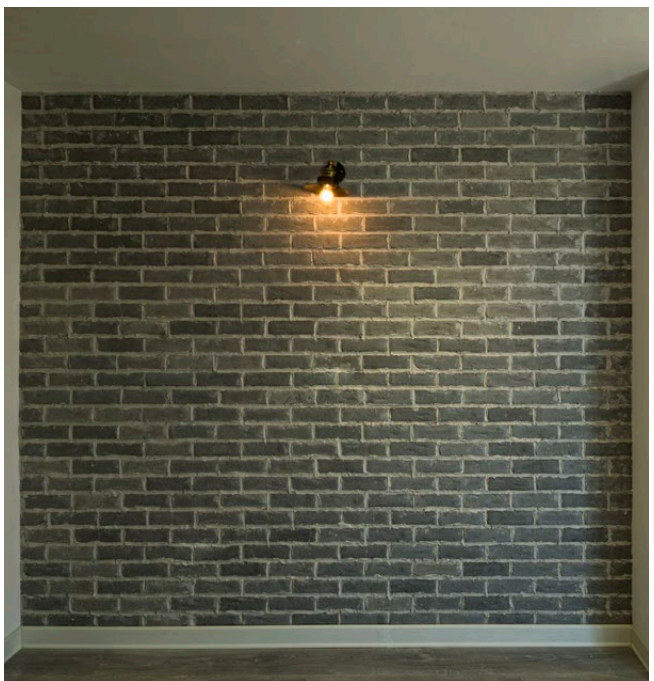
3 cm |

Dimensions •

Thickness •



Color quality •







Old-style concrete brick



6 cm \* 21 cm |

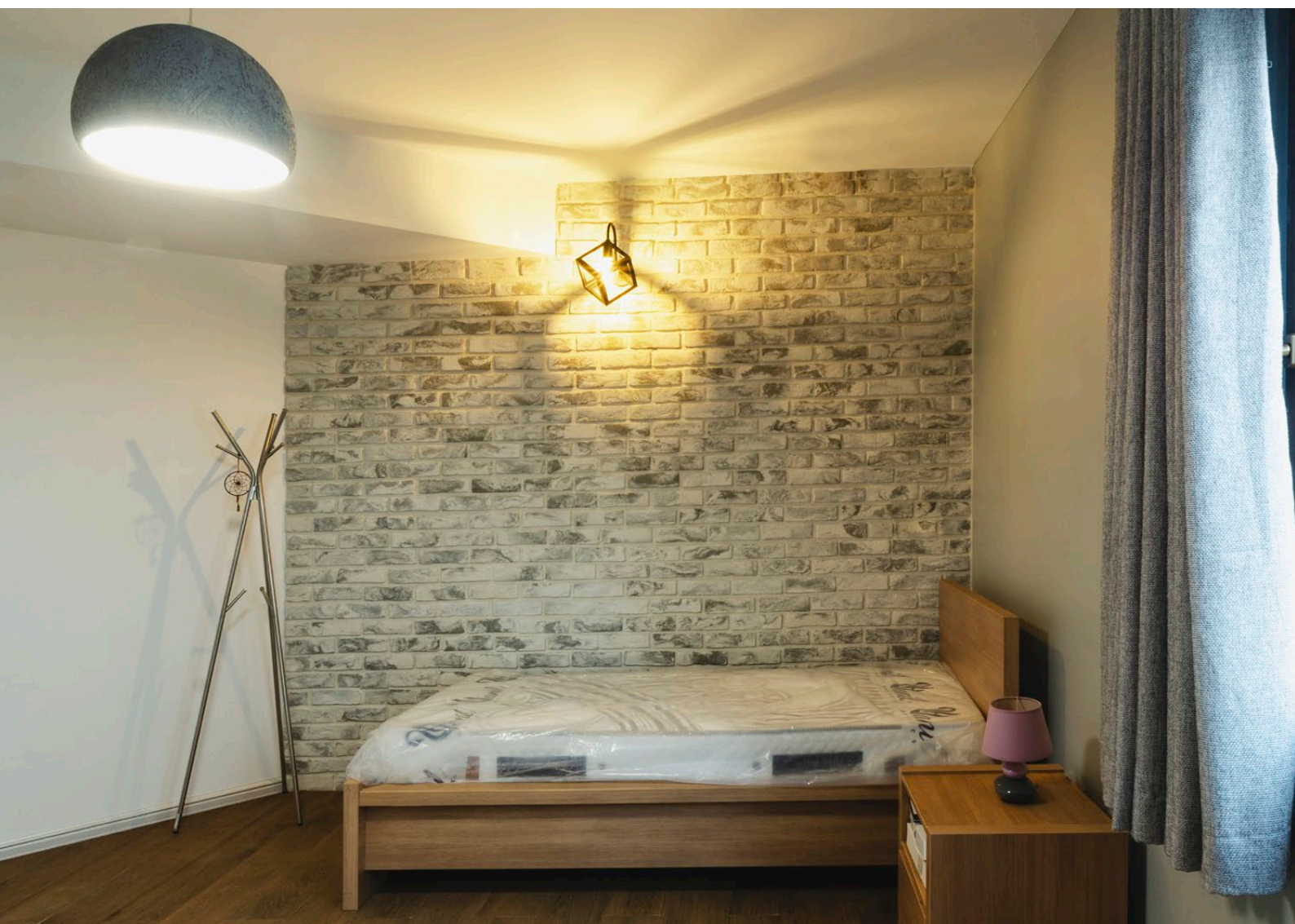
Dimensions •

3 cm |

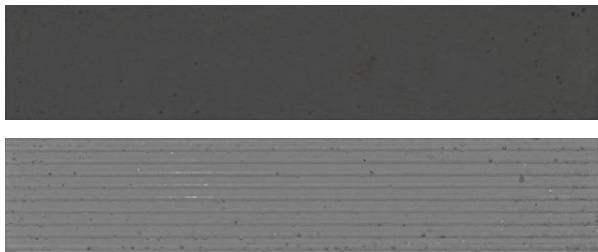
Thickness •



Color quality •







---

### New-style concrete brick

8 cm \* 40 cm |

Dimensions •

3 cm |

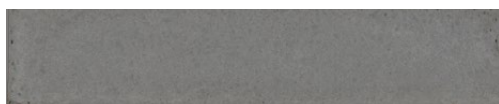
Thickness •



Color quality •







New-style concrete brick

8 cm \* 40 cm | Dimensions ●

3 cm | Thickness ●

● ● ● ● ● ● ● | Color quality ●








---

New-style concrete brick

33 cm \* 7 cm |  
3 cm |

- Dimensions
- Thickness
- Color quality











## Afra concrete brick

100 cm \* 10 cm

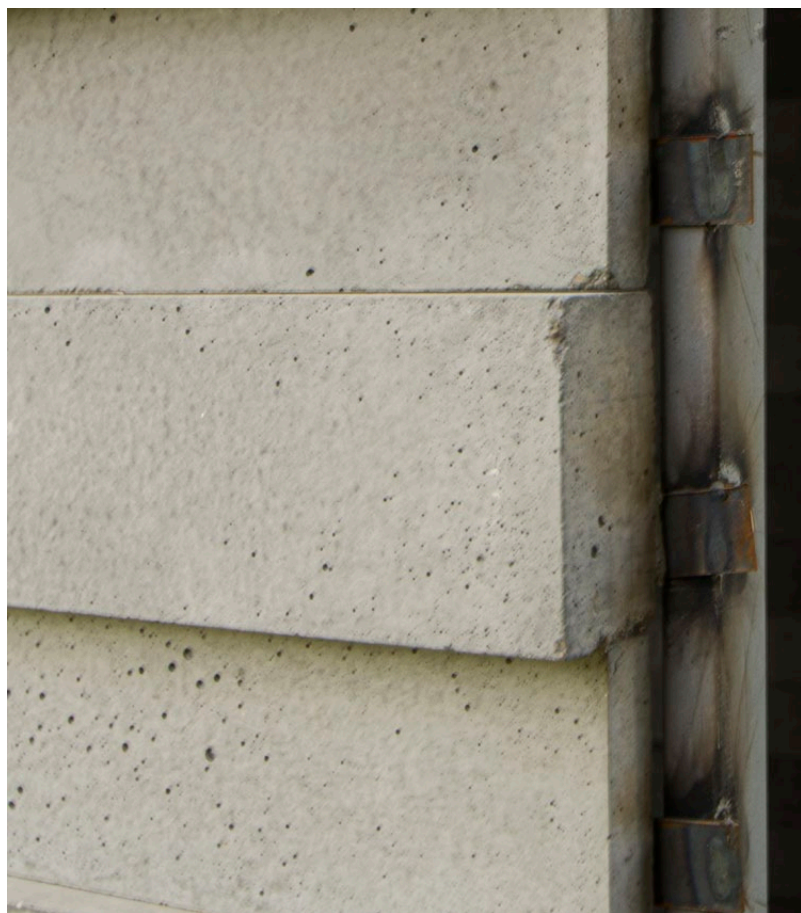
Dimensions ●

3 cm , 5 cm

Thickness ●



Color quality ●









# Afra concrete brick

100 cm \* 10 cm

Dimensions ●

3 cm , 5 cm

Thickness ●

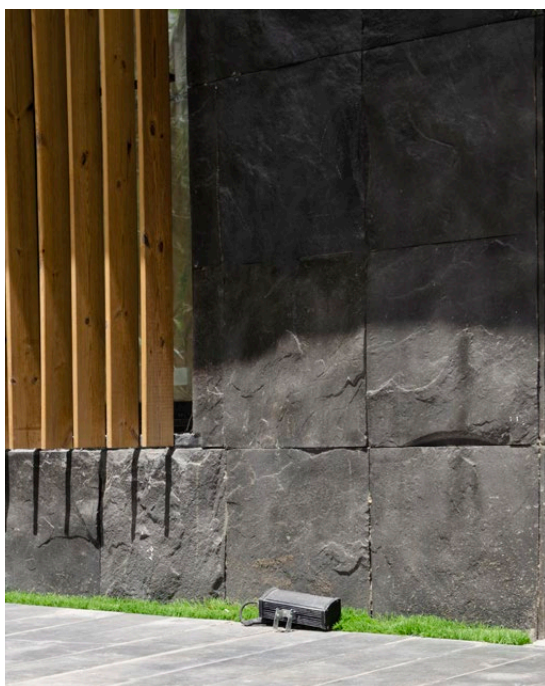
Color quality ●











### Rocky concrete Tiles

50 cm \* 50 cm

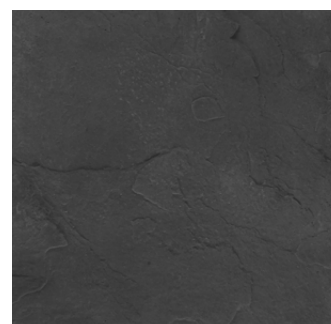
• Dimensions

3 cm

• Thickness



• Color quality











concrete tiles

100 cm \* 20 cm |  
3 cm |

Dimensions •

Thickness •



Color quality •









### Linear concrete tile

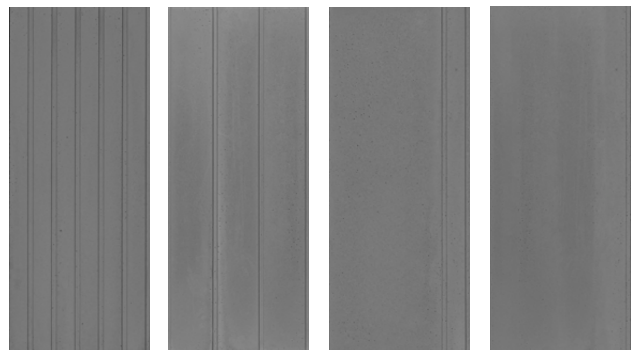
100 cm \* 40 cm |

3 cm |

Dimensions •

Thickness •

Color quality •



These tiles can be implemented using various methods, including repetition, symmetry, or by creating a rhythm.









## Linear concrete tile

100 cm \* 40 cm |

Dimensions •

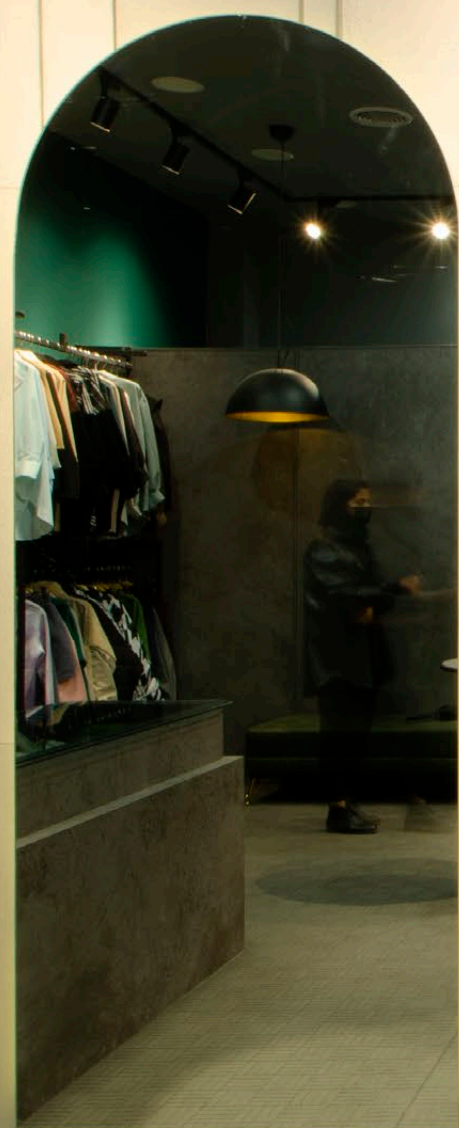
3 cm |

Thickness •



Color quality •







---

## Textured concrete tiles

50 cm \* 50 cm

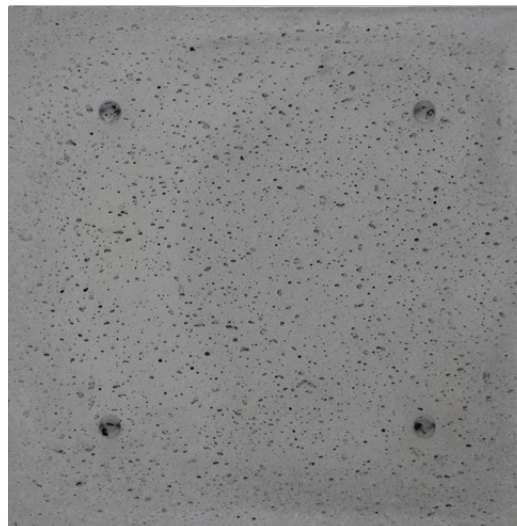
Dimensions •

3 cm

Thickness •



Color quality •







Concrete tiles

90 cm \* 50 cm |

Dimensions •

3 cm |

Thickness •



Color quality •







---

### Shamooti Fire brick

7 cm * 31 cm	Dimensions •
2.5 cm	Thickness •

---





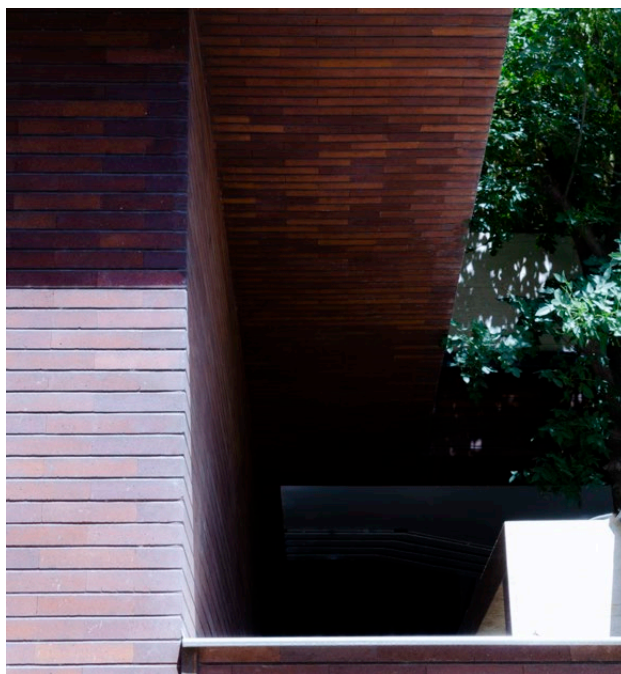
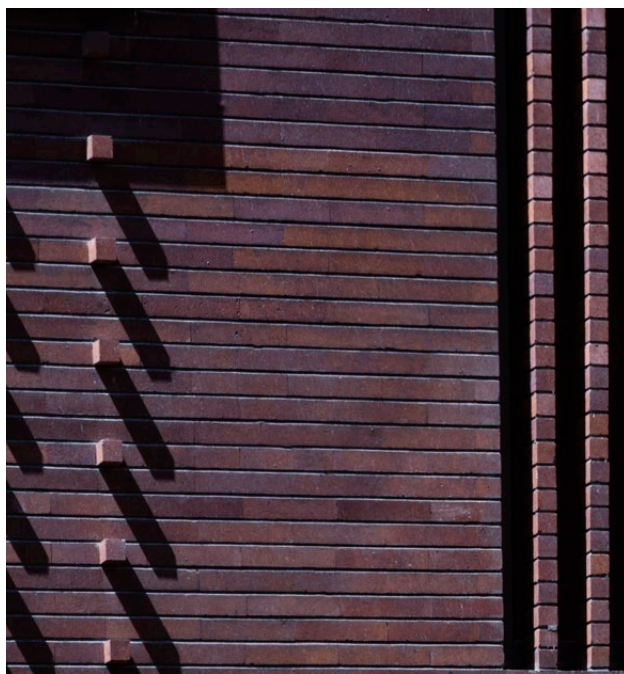


---

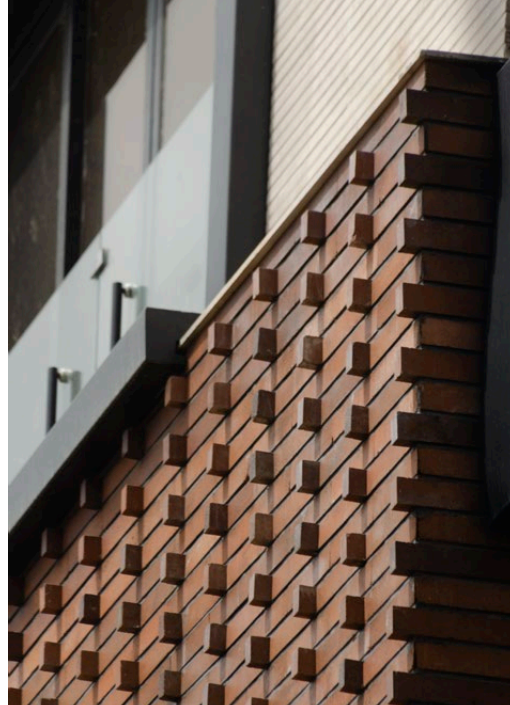
### English Fire brick

7 cm * 31 cm	Dimensions •
2.5 cm	Thickness •

---







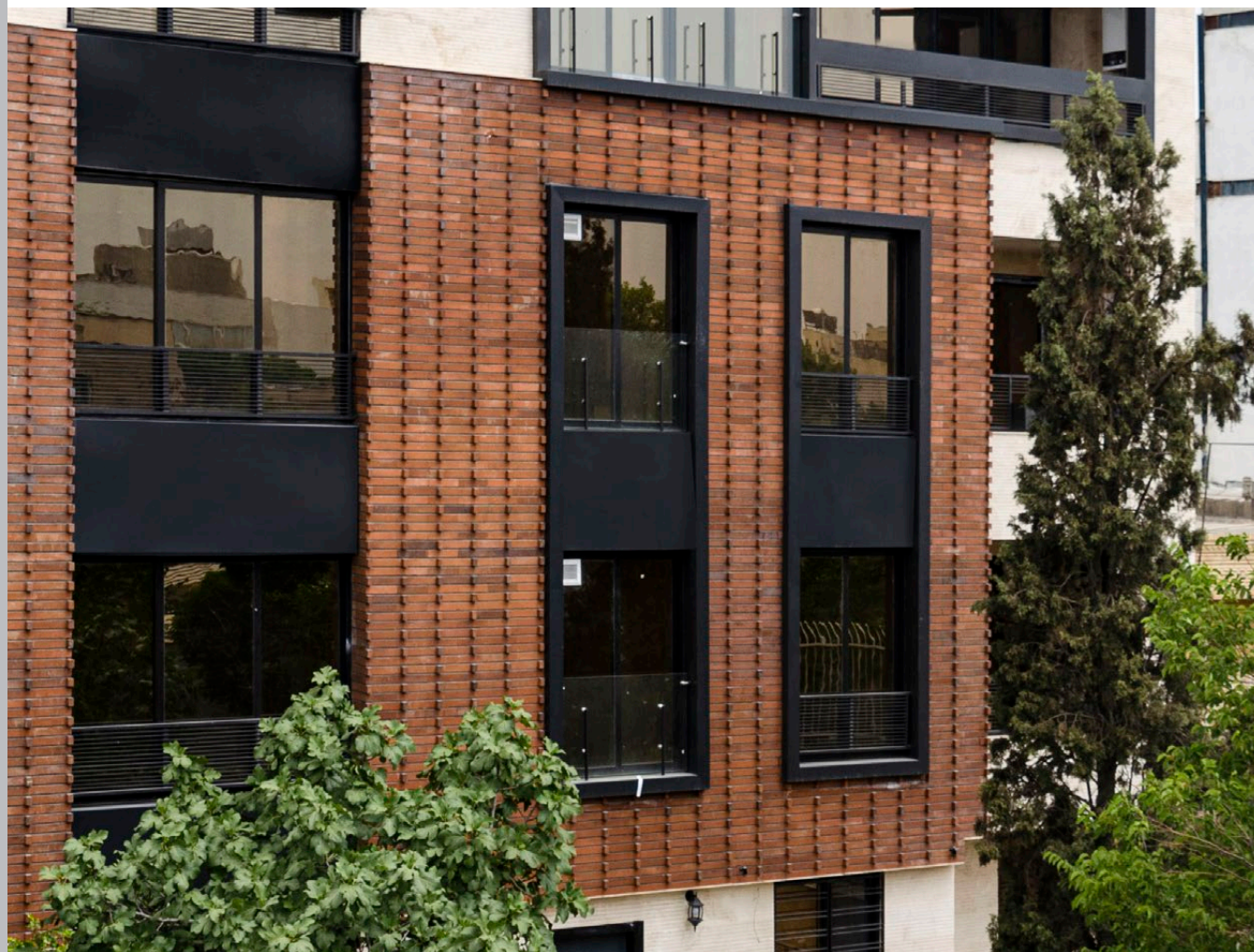
---

### English Fire brick

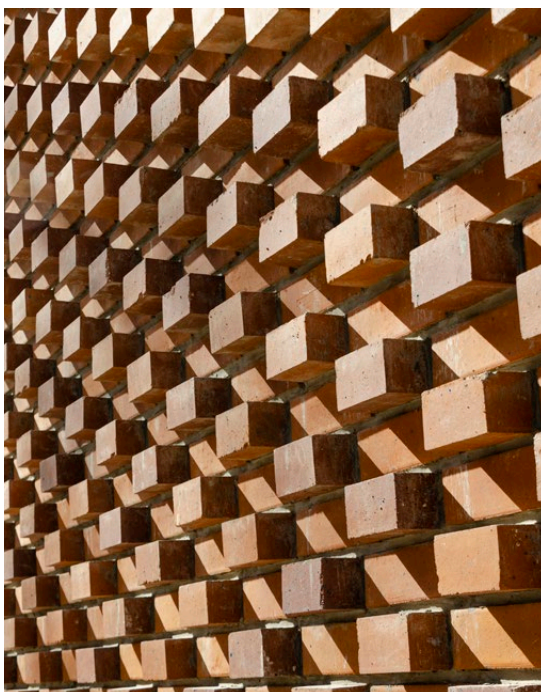
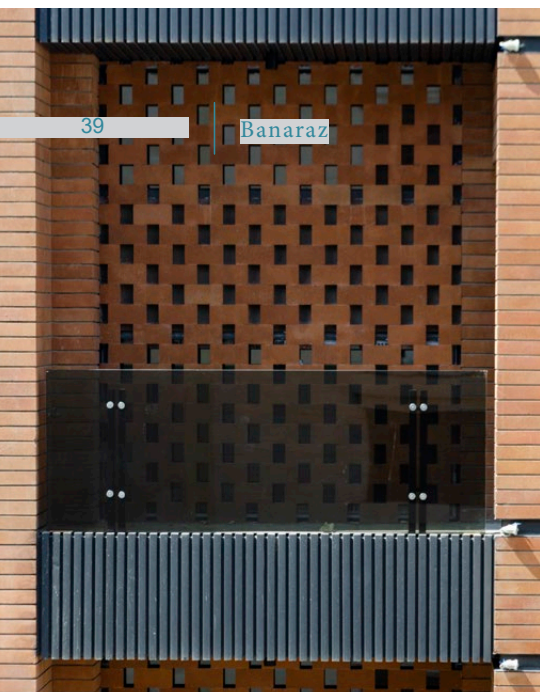
---

7 cm * 31 cm	Dimensions •
2.5 cm	Thickness •

---





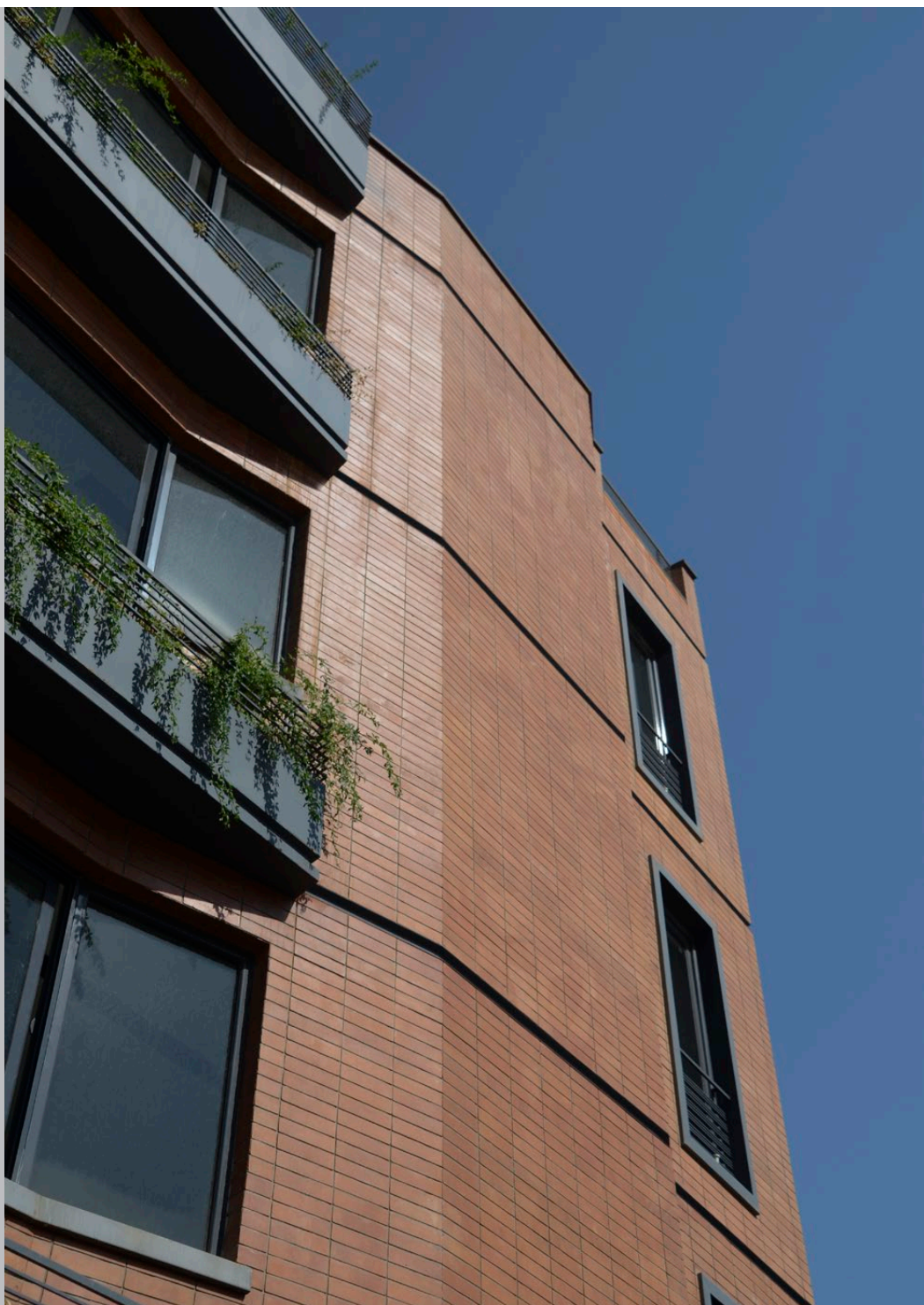


---

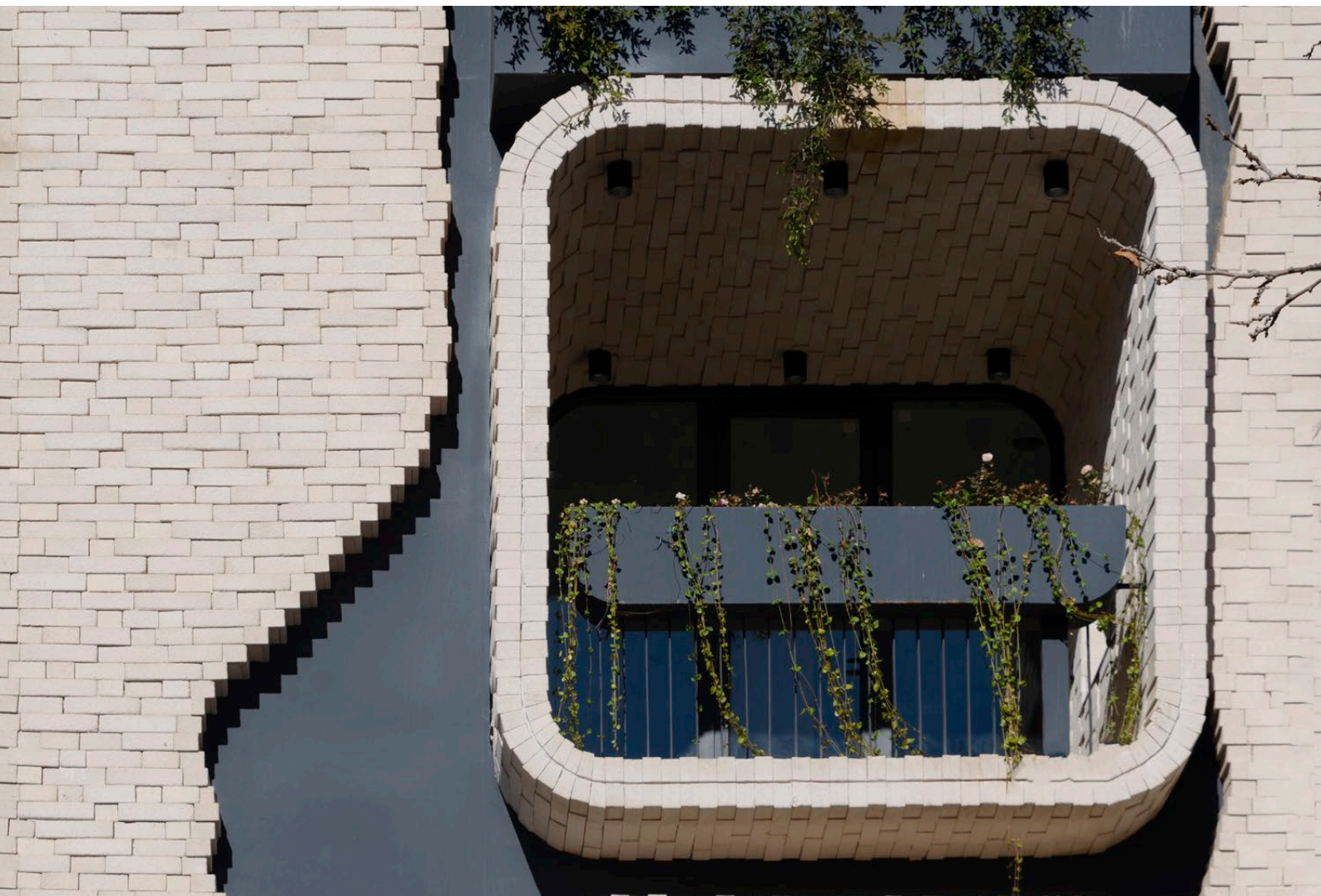
## Orange Fire brick

7 cm \* 31 cm | Dimensions •  
2.5 cm | Thickness •

---







---

### White Fire brick

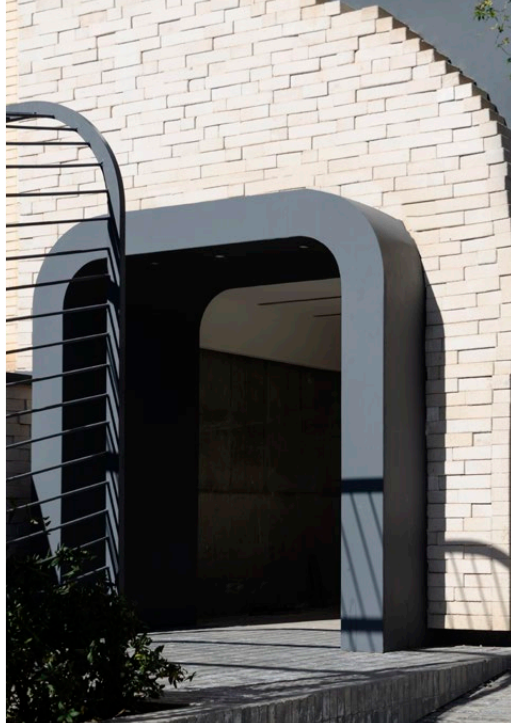
7 cm * 31 cm		Dimensions	•
2.5 cm		Thickness	•

---

In this project, the surface of the bricks has been textured to meet the specific requirements of the project.











## Approach

Bana Raz Company is striving to produce and introduce a new and up-to-date generation of building products called "Reinforced Lightweight Concrete." With its unique nature, it aims to address the weaknesses of previous generations while emphasizing the strengths and potential of this modern product.

Bana Raz, with its utmost effort, seeks to foster creativity and deliver acceptable quality in its products, following a modern approach while staying true to architectural principles. By doing so, it can become a valuable and effective contributor to this challenging yet rewarding path. This Iranian product is a testament to art and innovation in Iran, particularly in Shiraz.